



woodardcurran.com
COMMITMENT & INTEGRITY DRIVE RESULTS

Monthly Operating REPORT

Monmouth, Illinois

Department of
Public Works

February 2022



TABLE OF CONTENTS

SECTION

Executive Summary	
1. HEALTH AND SAFETY/STAFF	
2. WASTEWATER TREATMENT	
4. REVENUE COLLECTION	
5. ESTIMATED ANNUAL COST	
6. MAINTENANCE ACTIVITIES	

LIST OF TABLES

TABLE

Table 2-1:	Water Quality vs. NPDES Permit Limits
Table 3-1:	Monthly Chemical Usage for Ion Exchange Softening
Table 4-1:	Revenue Collection
Table 5-1:	Estimated Annual Budget – Year 9

|

EXECUTIVE SUMMARY

The February Public Works monthly report provides an overview of the month's activities and statistical data including safety training, wastewater treatment effluent quality, water production, billing and collection statistics for municipal services, maintenance activities, maintenance and repair costs vs. monthly thresholds, water treatment chemical costs, overall project cost and performance to annual budget.

A number of items to note :

Key Equipment performed a complete rebuild of the Street Sweeper of all of the wear parts including conveyors, all belts, brooms, broom bearings, hopper, shaft bearings and seals, and all miscellaneous new parts. The sweeper was delivered back to the Street Department at the end of March, ready to go.

Tonka Filter, the supplier of the softening vessels used at the water treatment plants, inspected one of the vessels at the north water treatment plant that had sprung a leak in the side of the vessel. What they found was a portion of the internal underdrain system has essentially eroded away and the vessel will need to be refurbished including new underdrain system, support media, and resin. Given the service life of the vessels, going on 20 years, Tonka is recommending that all 4 of the 20-year-old vessels be refurbished with new underdrain system, support media, and resin. Each vessel will take 2-3 weeks to refurbish, and we can only take one vessel out of service at a time due to the water demand from the north water plant. The good news is this work can be performed on site without removing the vessels from the building. We are awaiting approximate cost and scheduling information from Tonka. Time will be of the essence in completing this project as the other 3 vessels are most likely close to the end of their service life pending refurbishment. Tonka believes the south water plant vessels are not near the end of their service life since the plant demand is about half what it is at the north water plant.

Please contact me at 309-734-4026 with any questions.

Regards, Andy

1. HEALTH AND SAFETY/STAFF

There were no safety incidents or near misses in February . With the COVID 19 pandemic affected everyone, our staff is updated regularly on any new policy change, preventative measures, and PPE. All staff members are practicing social distancing while at work to help prevent the spread of the virus.

2. WASTEWATER TREATMENT

The Consolidated WWTP treated and discharged 137 million gallons of treated wastewater in the month of February . There were no combined sewer overflow events in February . The weather station at the plant reported 9.5” of snow and 1.5” of rain during the month. The Consolidated Plant continues to produce excellent effluent quality. The table below outlines the water quality vs. NPDES permit limits.

Table 2-1: Water Quality vs. NPDES Permit Limits

	Monthly Average	Permit Limit
Flow (MGD)	4.9	4.62
Ammonia N mg/l	0.1	1.5
CBOD5 mg/l	1	10
Total Phos	0.8	1
Chloride's mg/l	358	500
Suspended Solids mg/l	11	12

3. WATER TREATMENT

The water treatment plants produced 103 million gallons of finished water in February . Finished water quality met all standards per the Clean Water Act for drinking water. The table below outlines the chemical usage for ion exchange softening for the month.

Table 3-1: Monthly Chemical Usage for Ion Exchange Softening

	Daily Average	Monthly Total
Treated Water to System	3.8 MG	103 MG
Poly Phosphate Usage-lbs.	140 lbs.	3,790 lbs.
Salt Usage = tons	5.6	151 tons
Chlorine Usage - lbs.	146	3,940 lbs.

5. TOTAL ANNUAL COST

Table 5-1: Annual Budget – Year 9

Budget Category	Month Budget	Month Actual	YTD Budget	YTD Actual	Annual Budget	over(under)
Labor (D.L. + FB)	\$117,555	\$119,900	\$1,260,256	\$1,246,898	\$1,528,218	(\$13,359)
Utilities	\$3,017	\$9,141	\$32,345	\$32,917	\$39,222	\$572
Chemicals Costs	\$24,213	\$32,245	\$259,572	\$236,673	\$314,763	(\$22,899)
Maintenance\Repair	\$28,094	\$22,788	\$301,181	\$268,492	\$365,220	(\$32,689)
Sludge Disposal Costs	\$0	\$0	\$0	\$7,500	\$0	\$7,500
Lab Supplies\Equip	\$3,298	\$2,878	\$35,354	\$35,549	\$42,871	\$195
Office Supplies	\$1,425	\$1,255	\$15,278	\$19,203	\$18,526	\$3,925
Miscellaneous Expenses	\$3,742	\$3,636	\$40,118	\$46,447	\$48,648	\$6,329
Other Operating Costs	\$10,861	\$11,442	\$116,441	\$170,992	\$141,199	\$54,551
Overhead (G.A.)	\$26,545	\$27,074	\$284,574	\$281,558	\$345,081	(\$3,017)
Subtotal Year 8	\$218,750	\$230,360	\$2,345,118	\$2,346,228	\$2,843,748	\$1,110
Fixed Fee Year 8	\$15,750	\$16,586	\$168,849	\$168,928	\$204,750	\$80
Total	\$234,500	\$246,945	\$2,513,967	\$2,515,156	\$3,048,498	\$1,189

6. MAINTENANCE ACTIVITIES

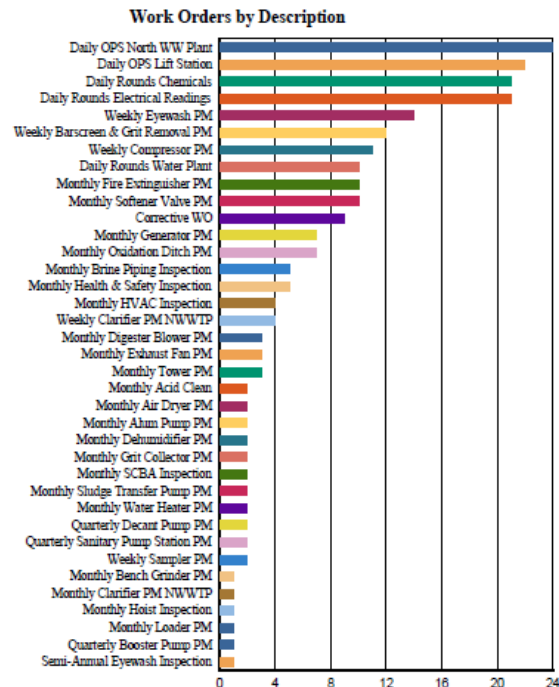
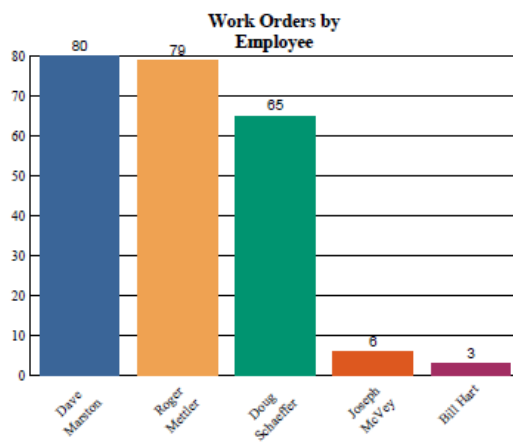
Utilizing the Utility Cloud maintenance management program, staff completed 233 preventative and corrective workorders in February



Maintenance History Report Monmouth

Report Start 2/1/2022
Report End 2/28/2022

Work Orders by Type	Total
Corrective Maintenance	108
Inspections	43
Preventative Maintenance	84
Total	233



CORRECTIVES

Date	Asset Name	Work Order Description	Staff	Work Type	Status
Corrective Maintenance					
Corrective WO					
02/25/2022	SE 4-in lines	E. 7th&S.1st repair water main	Joseph McVey	Corrective Maintenance	Closed
02/25/2022	SE 4-in lines	1000 S. 4th St. X220481098, 4"x8" Clamp, 20 Ton Rock.	Joseph McVey	Corrective Maintenance	Closed
02/25/2022	Force Main	1000 Block west Girard. Forced Main break repair.	Joseph McVey	Corrective Maintenance	Closed
02/25/2022	SE 4-in lines	S. 3rd @E.5th water main repair	Joseph McVey	Corrective Maintenance	Closed
02/18/2022	N 8th Separation Lift Station	Install new ABS pump #2	Doug Schaeffer	Corrective Maintenance	Closed
02/08/2022	North 8-in lines	100E. Broadway Water main repair	Joseph McVey	Corrective Maintenance	Closed
02/03/2022	N 8th Separation Lift Station	New contactor/overload for pump 2 installed	Doug Schaeffer	Corrective Maintenance	Closed
02/03/2022	Wastewater Treatment Plant	New surge suppression device installed.	Doug Schaeffer	Corrective Maintenance	Closed